

① LOWER FLOOR PLAN

PRELIMINARY  
NOT FOR CONSTRUCTION

**SUPPLIED BY ACCESS 2000**

|   |   |
|---|---|
| ① | SUNSHINE CEILING                        |
| ② | 3/4" PLYWOOD SUBFLOOR                   |
| ③ | 4' FLUORESCENT LIGHTS (2)               |
| ④ | CAR OPERATING STATION (STAINLESS STEEL) |
| ⑤ | TELEPHONE JACK                          |
| ⑥ | SOLID OAK / STAINLESS STEEL HANDRAIL    |
| ⑦ | 3/4" TFM WOOD PANEL                     |
| ⑧ | CALL STATION (STAINLESS STEEL)          |
| ⑨ | RESIDENTIAL DOOR INTERLOCK              |
| Ⓐ | 3.5HP OIL HYDRAULIC SUBMERSED PUMP UNIT |
| Ⓑ | PROGRAMMABLE LOGIC CONTROLLER           |
| Ⓒ | EMERGENCY POWER BACKUP UNIT             |

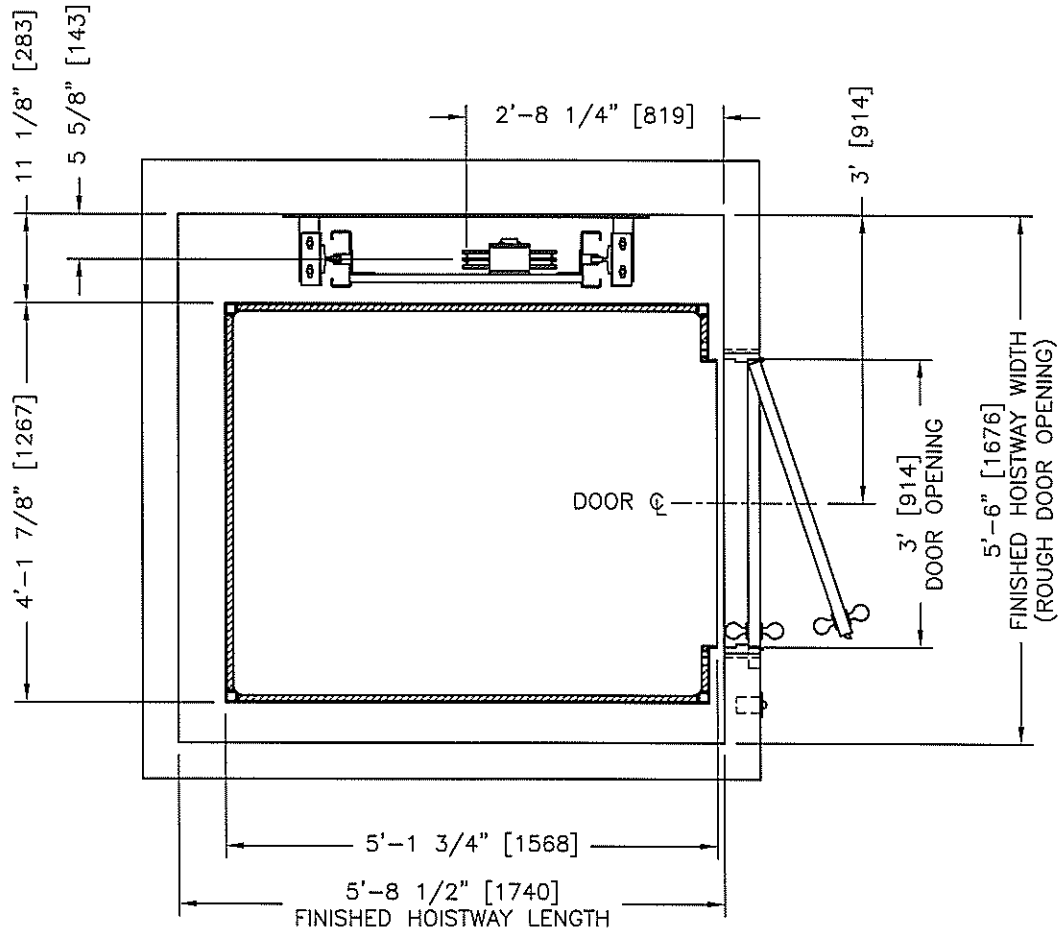
**SUPPLIED BY OTHERS**

|   |   |
|---|---|
| ⑩ | 36" SWING DOOR W/ DUMBY PASSAGE SET             |
| ⑪ | GUARDED PIT LIGHT, PLUG AND LIGHT SWITCH        |
| Ⓧ | FUSED 3 LEG LOCKABLE DISCONNECT (230V 1PH 40A)  |
| Ⓨ | MACHINE ROOM LIGHT, PLUG AND SWITCH             |
| Ⓕ | ACCESS SLEEVE LOCATED BY LIFT SUPPLIER          |
| Ⓖ | DEDICATED 110V-15A SUPPLY (LIGHTING & CONTROLS) |

**NOTES:**

1. HOISTWAY DIMENSIONS SHOWN ALLOW A REASONABLE TOLERANCE FOR VARIANCES ON THE CONSTRUCTION OF THE HOISTWAY. ADDITIONAL FINISH MAY BE REQUIRED ONCE DOORS AND PLATFORM HAVE BEEN INSTALLED.
2. RUNNING CLEARANCES 19/32" [15 mm] MAX ON ACCESS SIDES

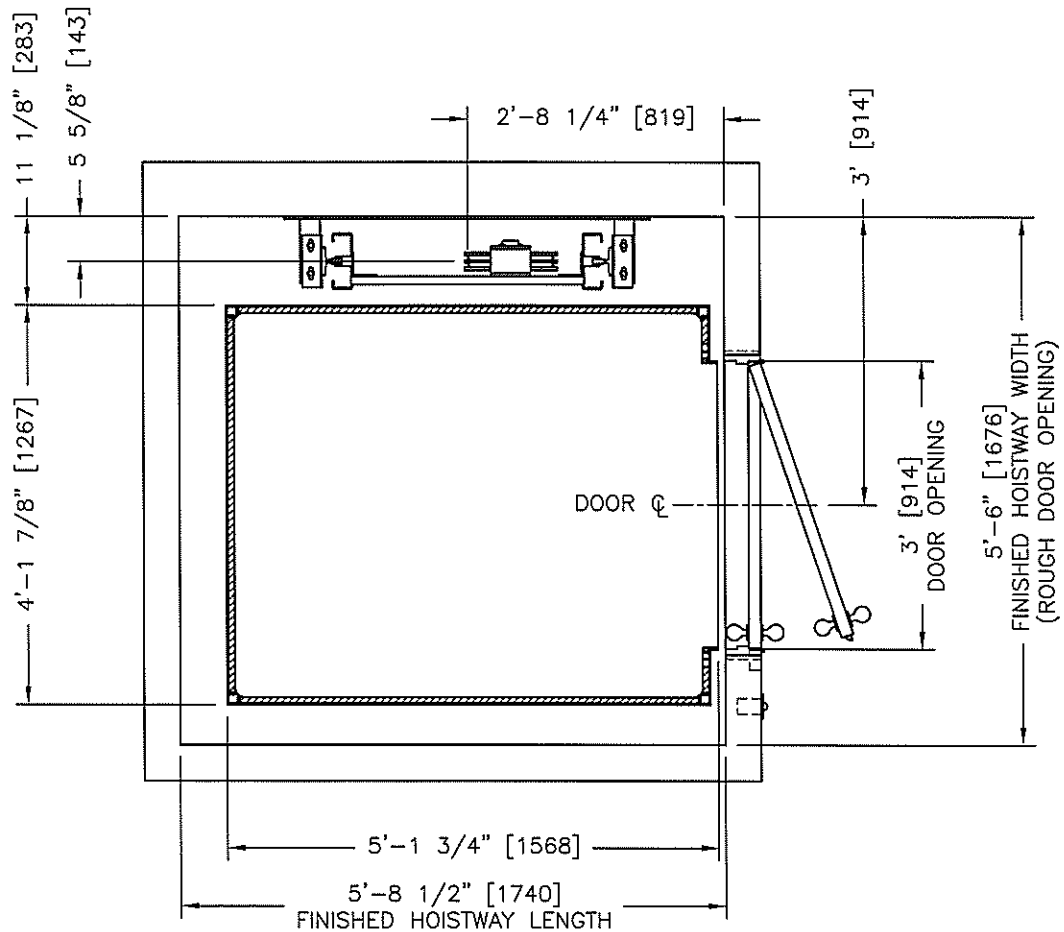
|          |   |              |  |
|----------|---|--------------|--|
|          | Ph: (306)975-1171<br>Fax: (306)934-6900<br>626 Weldon Ave.<br>Saskatoon, Sk.<br>S7M 2T9<br>Canada | REV #   DATE | DESC: 4x5 F, 3 STOP -BASEMENT FLOOR PLAN |
|          |   |              | JOB: BARLOW RESIDENCE (RH)               |
|          |   |              | ADDRESS: SASKATOON, SK                   |
| DWN: ARO | DATE: 11/06/13  | SCALE: 1:24  | DWG: PLAN-01                             |
|          |   |              | INSTALLER: ACCESS 2000                   |



② MAIN FLOOR PLAN

PRELIMINARY  
NOT FOR CONSTRUCTION

|  |                |   |              |      |                                     |
|--|----------------|---|--------------|------|-------------------------------------|
| <b>ACCESS 2000</b><br>Elevator and Lift Inc. |                | Ph: (306)975-1171<br>Fax: (306)934-6900<br>626 Weldon Ave.<br>Saskatoon, Sk.<br>S7M 2T9<br>Canada | REV #        | DATE | DESC: 4x5 F, STOP - MAIN FLOOR PLAN |
|  |                | JOB: BARLOW RESIDENCE (RH)  |              |      |                                     |
|  |                | ADDRESS: SASKATOON, SK  |              |      |                                     |
|  |                | INSTALLER: ACCESS 2000  |              |      |                                     |
| DWN: ARO                                     | DATE: 11/06/13 | SCALE: 1:24   | DWG: PLAN-02 |      |                                     |



3 SECOND FLOOR PLAN

PRELIMINARY  
NOT FOR CONSTRUCTION

**ACCESS  
2000**  
Elevator and Lift Inc.



Ph: (306)975-1171  
Fax: (306)934-6900  
626 Weldon Ave.  
Saskatoon, Sk.  
S7M 2T9  
Canada

| REV # | DATE |
|-------|------|
|       |      |
|       |      |
|       |      |

DESC: 4x5 F, 3 STOP - SECOND FLOOR PLAN

JOB: BARLOW RESIDENCE (RH)

ADDRESS: SASKATOON, SK

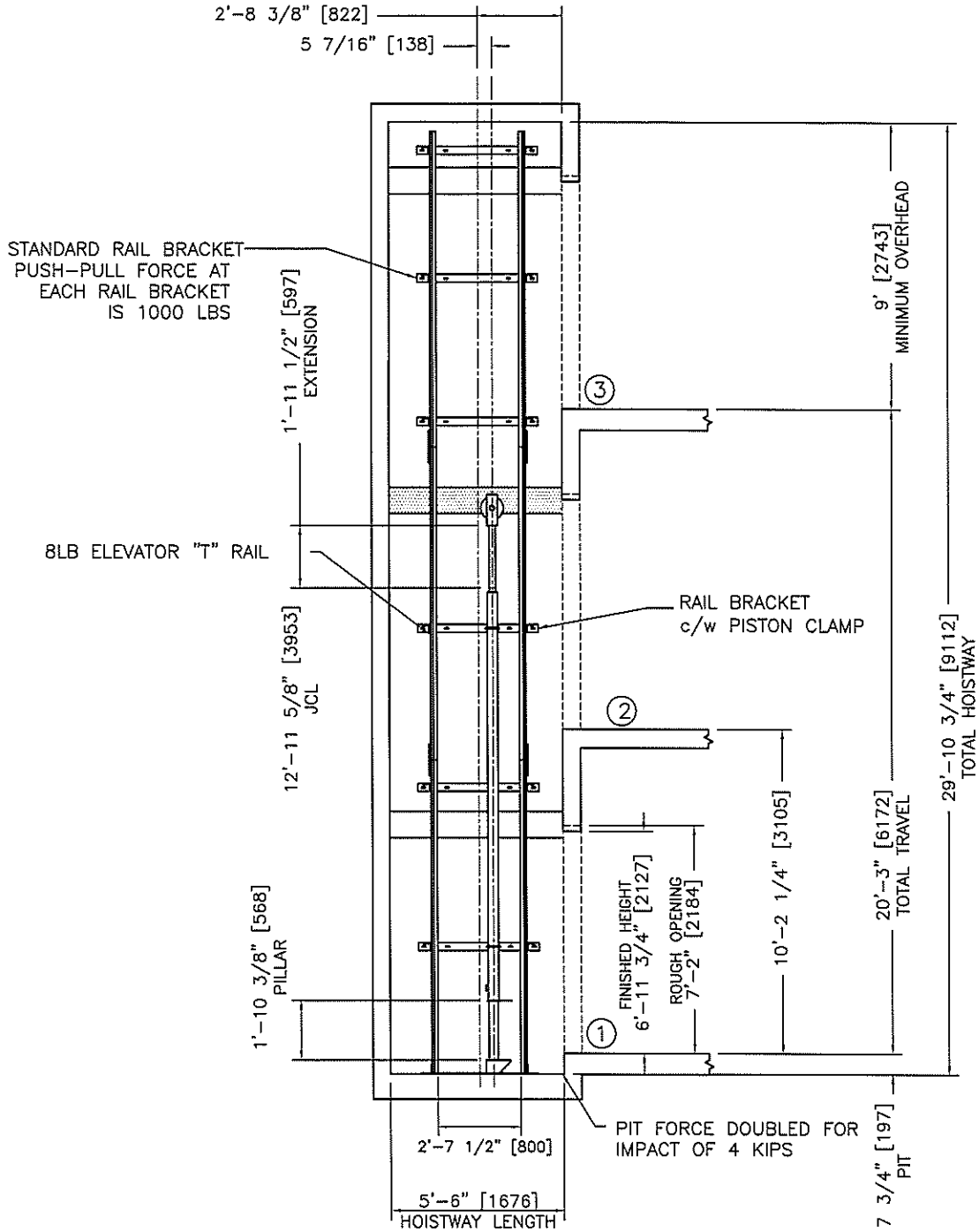
DWN: ARO

DATE: 11/06/13

SCALE: 1:24

DWG: PLAN-03

INSTALLER: ACCESS 2000



"A" SECTION  
 PLANS -01 SCALE: AS NOTED

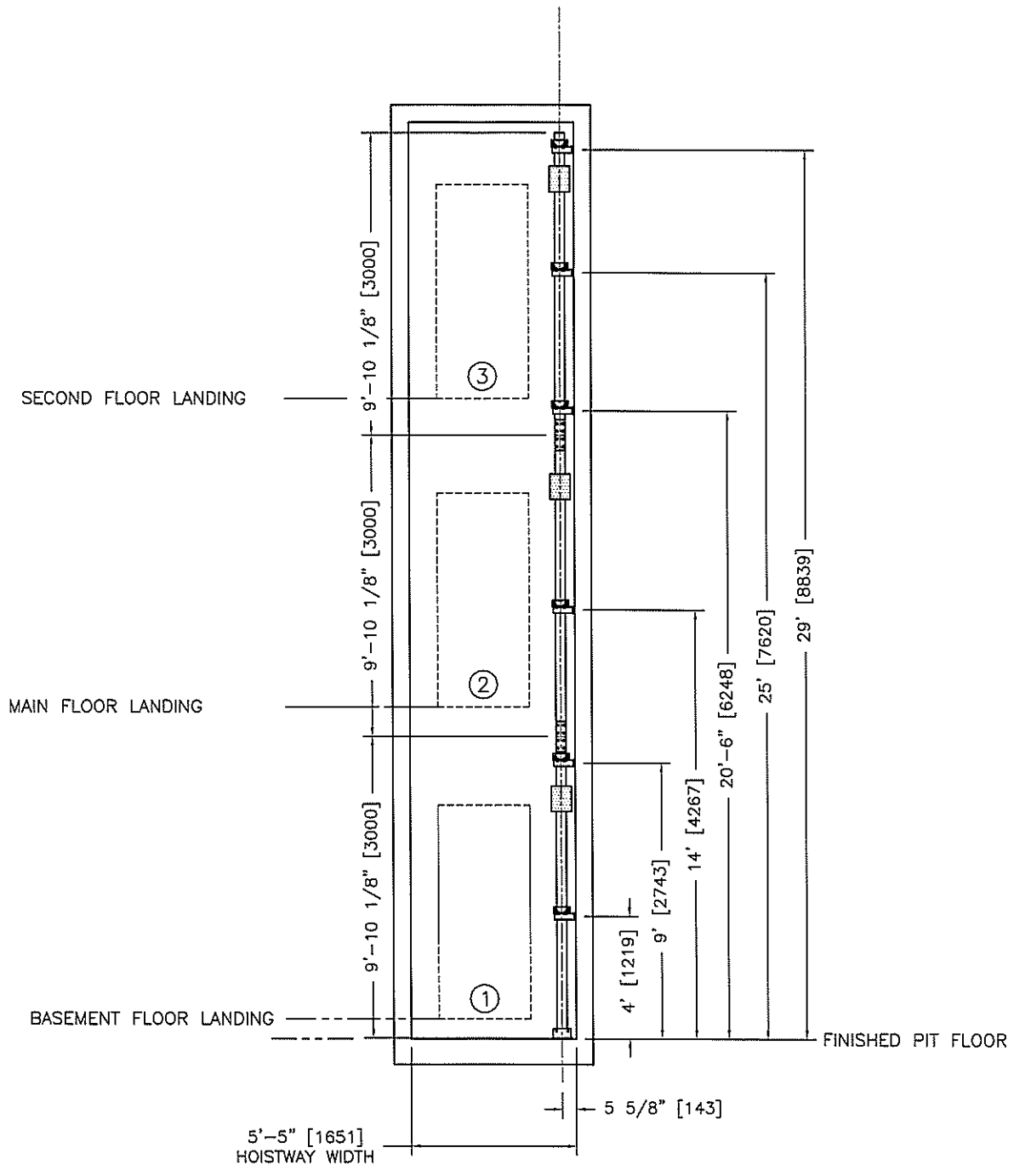
PRELIMINARY  
 NOT FOR PRODUCTION

- NOTES:
1. SHADED AREAS DENOTE LEVELING ZONES
  2. HOISTWAY DIMENSIONS SHOWN ALLOW A REASONABLE TOLERANCE FOR VARIANCES IN THE CONSTRUCTION OF THE HOISTWAY. ADDITIONAL FINISH MAY BE REQUIRED ONCE PLATFORM AND DOORS HAVE BEEN INSTALLED.
  3. ROUGH DOOR OPENING IS TO BE THE TOTAL ENTRANCE WALL IF POSSIBLE




Ph: (306)975-1171  
 Fax: (306)934-6900  
 805 Ave P South  
 Saskatoon, Sk.  
 S7M 2X2  
 Canada

| REV #    | DATE           | DESC:                           |
|----------|----------------|---------------------------------|
|          |                | 4x5 F, 3 STOP - SECTION "A"     |
|          |                | JOB: BARLOW RESIDENCE (RH UNIT) |
|          |                | ADDRESS: SASKATOON, SK.         |
| DWN: ARO | DATE: 12/06/13 | SCALE: 1:64                     |
|          |                | DWG: SECTION-01                 |
|          |                | INSTALLER: ACCESS 2000          |



"B" SECTION  
 PLANS -01  
 SCALE: AS NOTED

PRELIMINARY  
 NOT FOR PRODUCTION

|  |   |   |                 |                        |                                   |
|--|---|---|-----------------|------------------------|-----------------------------------|
| <b>ACCESS 2000</b><br>Elevator and Lift Inc. |  | Ph: (306)975-1171<br>Fax: (306)934-6900<br>805 Ave P South<br>Saskatoon, Sk.<br>S7M 2X2<br>Canada | REV #           | DATE                   | DESC: 4x5 F, 3 STOP - SECTION "B" |
|  |   |   |                 |                        | JOB: BARLOW RESIDENCE (RH UNIT)   |
|  |   |   |                 |                        | ADDRESS: SASKATOON, SK.           |
| DWN: ARO                                     | DATE: 12/06/13  | SCALE: 1:64   | DWG: SECTION-02 | INSTALLER: ACCESS 2000 |                                   |

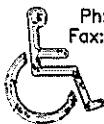
# SUMMIT CUSTOM HOME ELEVATOR

**CODE REFERENCE:** CSA B613-00 "Elevating Devices for the Handicapped in Private Residences"  
**MODEL:** SUMMIT  
**CAPACITY:** Maximum 1,000 LBS (454 Kgs)  
**SPEED:** 30 fpm (0.15 m/s)  
**NUMBER OF STOPS:**  2  3  4  5  
**PLATFORM SIZE:**  914 mm (3') x 1219 mm (4')  
 914 mm (3') x 1524 mm (5')  
 1219 mm (4') x 1524 mm (5')  
 Custom: \_\_\_\_\_  
**CONFIGURATION:**  Enter/exit same side  
 Straight through  
 Front and side 90°  
 Front, rear and side  
**POWER SUPPLY:** 208-240VAC, 1 phase, 60 Hz, on a dedicated 40 amp circuit  
**CONTROL(S):** 110VAC, 1 phase, 60 Hz, on a dedicated 15 amp circuit  
**MOTOR:** 3.5 HP, 208-240 VAC, 1 phase  
**PUMP:** "ULTIMA" 806-32-3.5 (Type ZERO), with submersible motor, GMV 3010 2 speed valve  
3/4" shutoff valve, low pressure switch, 24 VDC coils.  
**DOORS/GATES:** 36"x80" single swing door c/w locking latchset - supplied by others  
24VDC electric interlock with door closed and locked sensing - supplied by Access 2000  
 Manual operation  
 Power operated  
 Car mounted electronic safety screen  
**CALL STATIONS:** Constant pressure button and in use light with optional key switch  
Wall mounted at each landing  
**CAR STATION:** Constant pressure floor selection buttons with key switch and emergency stop button  
Panel mounted in elevator car  
**EMERGENCY DEVICES:** Emergency stop switch in car c/w audible alarm, auto-transfer battery back-up power  
maintains normal fluorescent lighting  
**HYDRAULIC HOSE:** 3/4" single braid hydraulic hose from pump unit to line rupture valve on cylinder

PRELIMINARY  
NOT FOR PRODUCTION

**DRIVE TYPE:**

|   |
|---|
| <input type="checkbox"/> <u>Direct Holeless Hydraulic</u><br>Cylinder: 60 mm single stage c/w flow control valve, mechanical final limits   |
| <input type="checkbox"/> <u>Direct Borehole Hydraulic</u><br>Cylinder: 60 mm single stage c/w flow control valve, mechanical final limits   |
| <input checked="" type="checkbox"/> <u>1:2 Roped Hydraulic</u><br>Cylinder: 80 mm single stage c/w flow control valve<br>mechanical upper final limit in cylinder, mechanical lower final limit by pit block<br>Safeties: electrical/mechanical slack cable device<br>Suspension: 2 - 3/8" 7x19 galvanized a/c cables, 14,400 lbs breaking strength<br>Length of ropes: 35'-0"<br>Sheave diameter: 12" (305 mm) |



Ph: (306)975-1171  
 Fax: (306)934-6900  
 626 Weldon Ave.  
 Saskatoon, Sk.  
 S7M 2T9  
 Canada



**DESC:** SUMMIT CUSTOM HOME ELEVATOR

**JOB:** BARLOW RESIDENCE (RH UNIT)

**ADDRESS:** SASKATOON, SK.

DWN: ARO

DATE: 12/06/13

SCALE: N.T.S.

SERIAL #: TBD

DWG: SPEC-01